



TECHNICAL DATA:

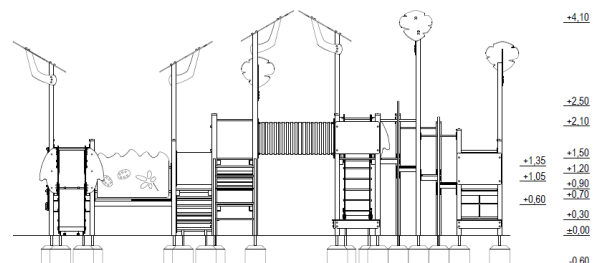
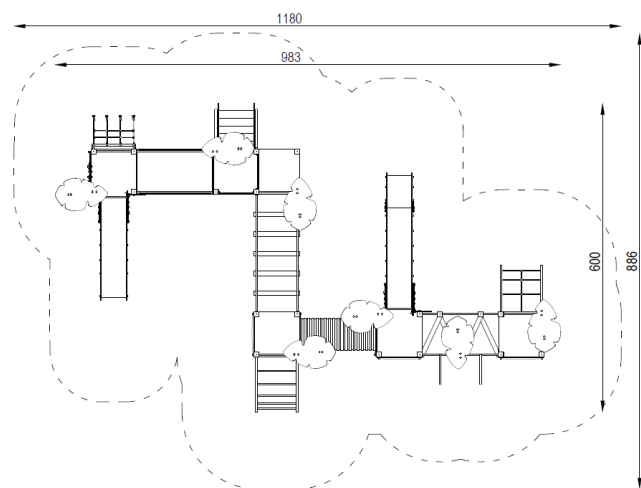
Device with easily and not easily accessible elements, according to standard EN 1176-1:2017

| | |
|-----------------------|---------------------|
| Device dimensions: | 9,83 x 6,00m |
| Device height: | 4,10m |
| Minimum space: | 11,80 x 8,86m |
| Falling area: | 76,50m ² |
| Critical fall height: | 1,50m |
| Foundations depth: | -0,60m |

The device according to EN 1176-1:2017
 Playground equipment and surfacing – Part 1:
 General safety requirements and test methods

- Safety surfaces:
- sand, gravel, bark, synthetic surface
 - min. thickness for loose particulate materials 200+100mm
 - synthetic surface according to critical fall height

Projection and device view



COMPONENTS:

| | |
|----------------------------------|-------|
| Tower, platform height 0,60m | 1 pc |
| Tower, platform height 0,90m | 3 pcs |
| Tower, platform height 1,50m | 2 pcs |
| Slide, height 0,90m | 1 pc |
| Slide, height 1,50m | 1 pc |
| Leaf-shaped roof | 7 pcs |
| Rope ladder | 1 pc |
| Arched rope ladder, height 0,90m | 1 pc |
| Arched ladder, height 0,90m | 1 pc |
| Vertical ladder | 2 pcs |
| Stairs, height 0,90m | 1 pc |
| Entry gangplank, height 0,90m | 1 pc |
| Slope rope bridge with beams | 1 pc |
| Slope bridge | 1 pc |
| Tunnel passage | 1 pc |
| Fireman's pole, height 1,20m | 1 pc |
| Fireman's pole, height 1,50m | 1 pc |
| „Connect animals” game | 1 pc |
| Bench | 4 pcs |

MATERIALS:

| | |
|---------------------------|---|
| Construction poles: | steel square profiles, galvanized, powder coated in gray |
| Anchors: | galvanized steel |
| Flat decorative elements: | HDPE sheets |
| Platforms, gangway: | waterproof plywood, with anti-slip layer, based on steel structure |
| Steel elements: | galvanized steel, powder coated |
| Surface of slope slide: | stainless steel |
| Ropes: | polypropylene braided with a steel, interconnected by plastic fasteners |
| Tunnel: | PVC pipe fastened to HDPE boards |
| Game panel: | maintenance free, integrated element |
| Caps: | plastic |
| Foundations: | concrete min. C12/15 standard |



GRUPA SATERNUS S.A.
ul. Nowa 32
41-500 Chorzów, Poland

Certificate beholder:
Producer:
Distributor:

GRUPA SATERNUS S.A. reserves all rights to protect copyright
Under the Act of February 4, 1994 on Copyright and Related Rights
(Journal of Laws No. 28, item 83), and in particular Art. 78 and 79 of this Law.

GRUPA SATERNUS S.A.
Saternus Production Sp. z o.o. sp. k.
Saternus Distribution Sp. z o.o. sp. k.