

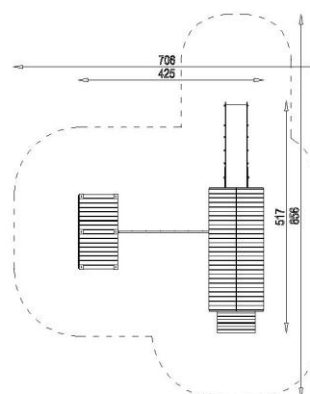


TECHNICAL DATA:

Easily accessible device,
according to standard EN 1176-1:2017

Device dimensions:	5,17 x 4,25m
Device height:	3,00m
Minimum space:	8,56 x 7,06m
Falling area:	41,75m ²
Critical fall height:	1,50m
Foundations depth:	-0,60m

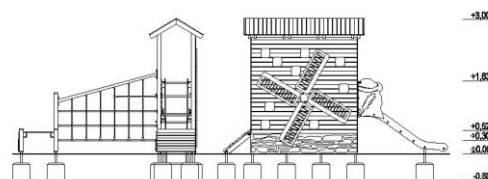
Top view with falling area



The device according to EN 1176-1:2012
Playground equipment and surfacing – Part 1:
General safety requirements and test methods

Safety surfaces:

- turf/topsoil, sand, gravel, bark, synthetic surface
- minimal thickness for loose particulate materials 200+100mm
- synthetic surface according to critical fall height



COMPONENTS:

Entry gangplank, height 60cm	1 pc
Vertical Rope net	1 pc
Application windmill	1 pc
Roofed square platforms, height 90 and 55cm	1 pc
Tower without roof, height 55cm	1 pc
Slide, height 90 cm	1 pc
Roof	1 pc

MATERIALS:

Construction poles:	glued laminated timber, varnish painted dark brown
Anchors:	galvanized steel
Flat decorative elements:	HDPE
Platforms, gangplank:	impregnated pinewood boards, with machined anti-skid surface
Surface of the slide:	stainless steel
Roof:	waterproof plywood boards, varnish painted in light grey
Walls:	impregnated plywood boards, varnish painted in dark brown
Ropes:	polypropylene braided with a steel, interconnected by plastic fasteners
Steel elements:	galvanized steel, powder coated
Caps:	plastic
Foundations:	concrete min. C12/15 standard



SATERNUS DISTRIBUTION Sp. z o.o.
sp.k.
ul. Nowa 32
41-500 Chorzów

Właściciel certyfikatu:
Producent:
Dystrybutor:

SATERNUS DISTRIBUTION Sp. z o.o. sp. k. zastrzega sobie wszelkie prawa do ochrony praw autorskich na podstawie Ustawy z dnia 04.02.1994 r. o prawie autorskim i prawach pokrewnych (DZ. U. Nr 28 poz. 83) a zwłaszcza art. 78 i 79 tejże ustawy.

GRUPA SATERNUS Sp. z o.o. S. K. A. (następca prawny Place Zabaw Saternus Sp. z o.o.)
Saternus Production Sp. z o.o. sp. k.
Saternus Distribution Sp. z o.o. sp. k.